

Template Designer User Manual

Doc No.:

Rev 1.0 Jan 2015

Part No.:

3DISC, FireCR Dental are trademarks of *3D Imaging & Simulations Corp.*, South Korea, and its affiliates. All other trademarks are held by their respective owners and are used in an editorial fashion with no intention of infringement. The data in this publication are for illustration purposes only and do not necessarily represent standards or specifications, which must be met by *3D Imaging & Simulations Corp.* All information contained herein is intended for guidance purposes only, and characteristics of the products and services described in this publication can be changed at any time without notice. Products and services may not be available in your local area. Please contact your local sales representative for availability information. *3D Imaging & Simulations Corp.* strives to provide as accurate information as possible, but shall not be responsible for any typographical error.

© Copyright 2010 *3D Imaging & Simulations Corp.*, all rights reserved, printed, and published in South Korea by *3D Imaging & Simulations Corp.*

3DISC
I M A G I N G

Contact



3D Imaging & Simulations Corp. Ltd (3DISC)
Bldg. 1, 48, Yuseong-daero 1184 beon-gil, Yuseong-gu
Daejeon, Korea

Tel : 82-42-931-2100
Fax : 82-42-931-2299

Website : www.3DISCimaging.com
E-mail : info@3DISCimaging.com

3DISC Americas
22560 Glenn Dr, Suite 116
Sterling, VA 20164 USA
Tel : 1-703-430-6080
E-mail : info@3DISCimaging.com



3DISC Europe
Gydevang, 39-41, 3450 Alleroed, Denmark
Tel : 45-88-276-650
E-mail : info@3DISCimaging.com

Warnings and used symbols

To ensure the safety of patients, staff and other persons, any changes to software and hardware delivered by **3D Imaging & Simulations Corp.** may only be made with prior written permission from **3D Imaging & Simulations Corp.**

Please read the respective manuals of the connected devices, such as of the X-ray generator, sensor, or reader, before starting to use the software.

The following symbols will be used throughout this manual:



DANGER

The functionality of the software can be destroyed in the case of incorrect use.

If unauthorized changes have been made to delivered software and hardware components, the warranty by **3D Imaging & Simulations Corp.** becomes void. **3D Imaging & Simulations Corp.** will not accept any responsibility or liability for the proper functioning of the product in such a case.



DANGER

General mandatory action manual.

The functionality of the system can be destroyed in the case of incorrect use.

If unauthorized changes have been made to delivered system and accessories, the warranty by **3D Imaging & Simulations Corp.** becomes void. **3D Imaging & Simulations Corp.** will not accept any responsibility or liability for the improper functioning of the product in such a case.



WARNING

The functionality of the system can be limited in the case of incorrect use. Hints that require special attention.



NOTE

Notes represent information that is important to know but which do not affect the functionality of the system.

1. Introduction

Template Designer is software which provide design tool to make user defined template. Template is used to arrange scanned images to a predefined layout at QuantorDent. **Template Designer** is installed during the QuantorDent installation.

Start of Template Designer

Find and launch *TemplateDesigner.exe* at QuantorDent installation folder.

Copy of Template

Templates are saved at *QuantorDent Foler/Setting/Tempate.xml* file. This file can be copied to other QuantorDent installation folder.

2. Main Window

Main Window of the Template designer is as Figure 2.1.

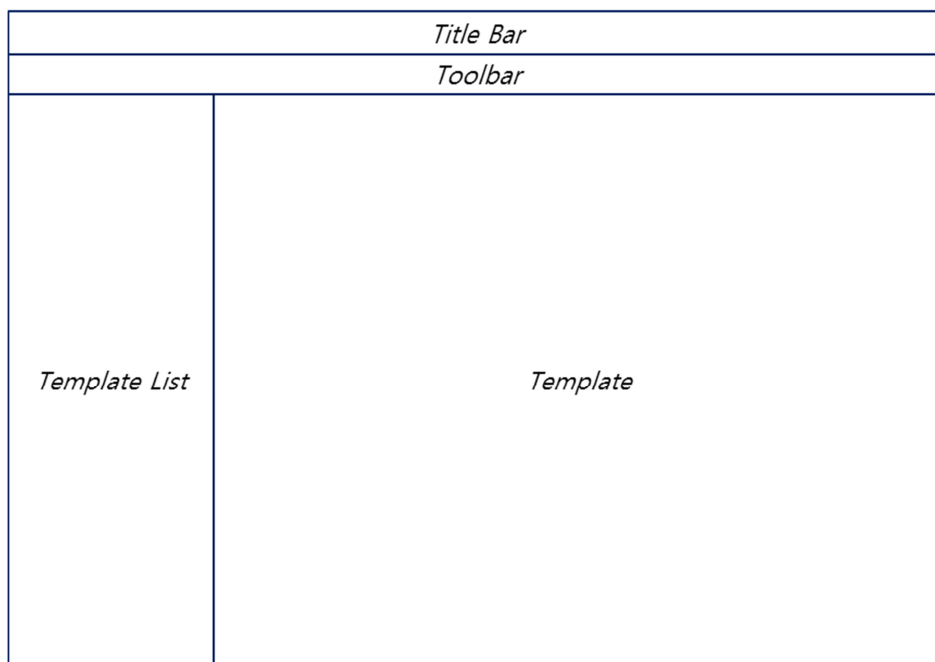


Figure 2.1 Main Window

3. *Creating a new template*

1. To create a new template click **New**
2. Enter the name of new template at Figure 3.1 and click **OK**

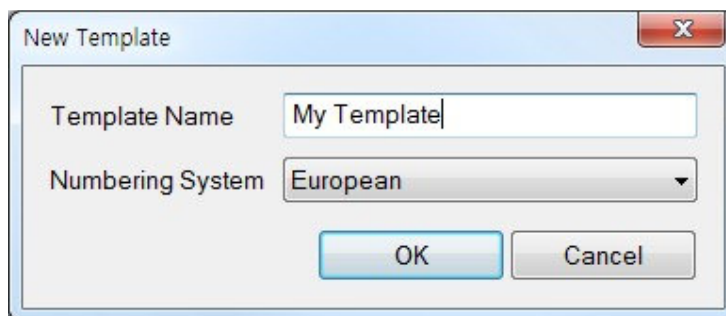


Figure 3.1 New Template

3. Select Image Display Format.
 - Standard
 - Row Symmetric
 - Column Symmetric
4. Standard Image Display Format: The standard format subdivides a template into image boxes of equal size, Therefore, the layout is fully symmetrical. i.e. the arrangement of image boxes on template is left-right and top-bottom.

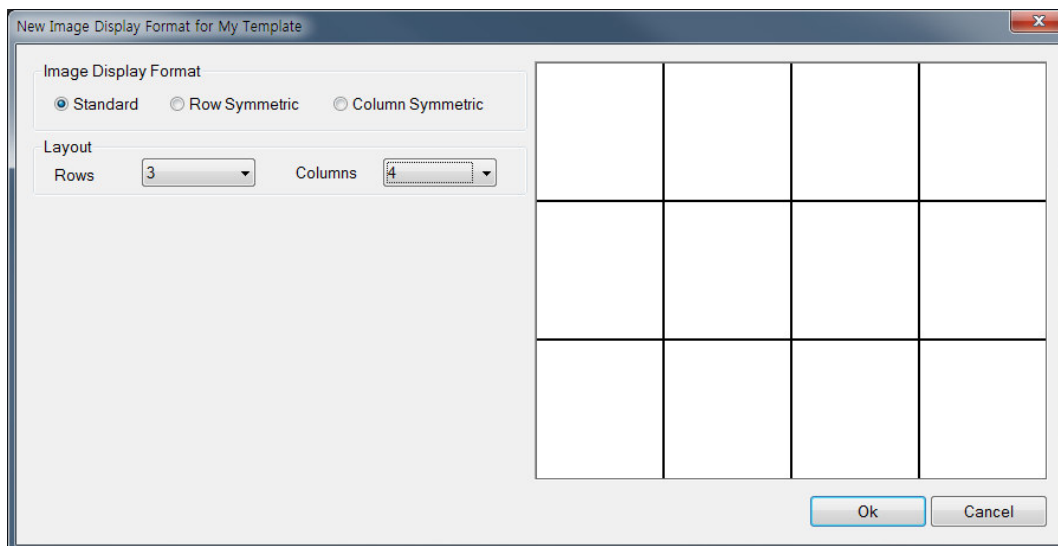


Figure 3.2 Standard Image Display Format

5. Row Symmetric Image Display Format: The row symmetric format subdivides a template into rows of image boxes of equal size. As a result, the layout is left-right symmetric, the associated symmetry line is vertical. There is no top-bottom symmetry.

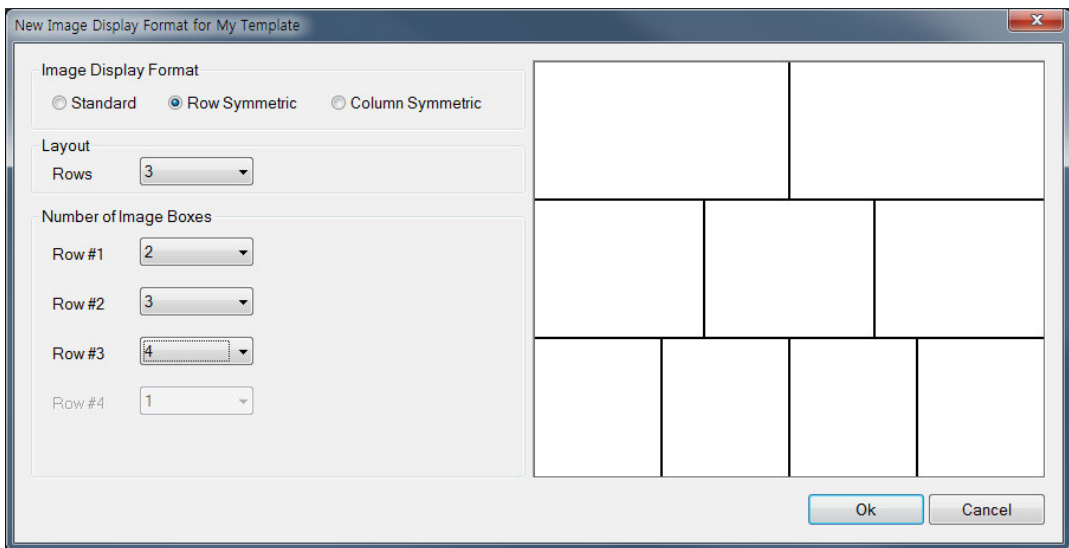


Figure 3.3 Row Symmetric Image Display Format

6. Column Symmetric Image Display Format: The column symmetric format subdivides a template into columns of image boxes of equal size. As a result, the layout is top-bottom symmetric, the associated symmetry line is horizontal. There is no left-right symmetry.

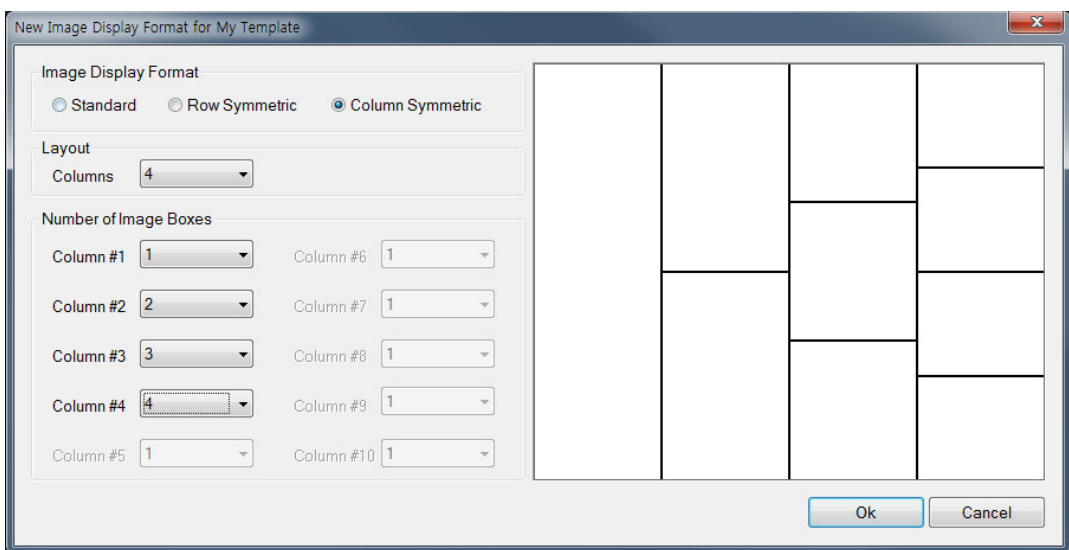


Figure 3.4 Column Symmetric Image Display Format

7. Click **OK** to save

8. Now you can see image boxes.

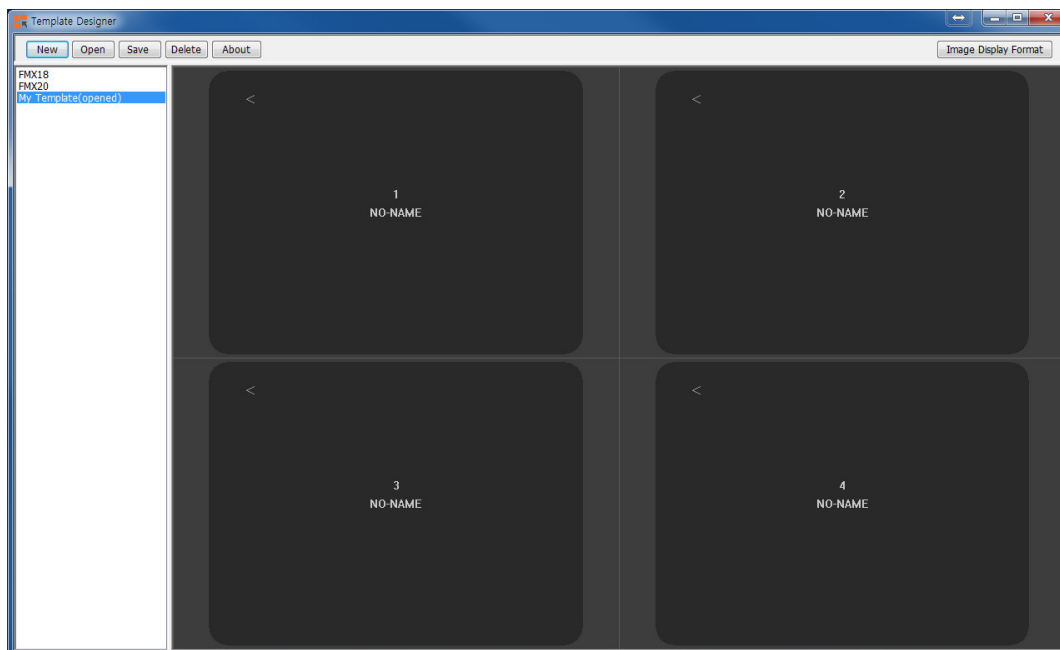


Figure 3.5 Opened Template

9. Double click image box and enter the image box properties.

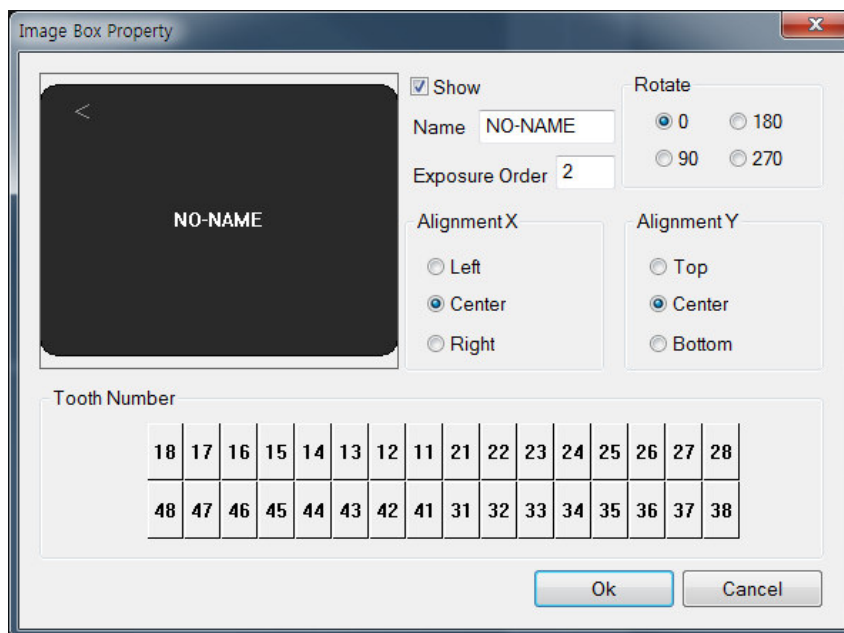


Figure 3.6 Image Box Property

- Show: Check this button to show image box.
- Name: Title of the image box.
- Exposure Order: Exposure order of the image box
- Rotate: Select rotation angle if required.
- Alignment X: Select horizontal alignment
- Alignment Y: Select vertically alignment
- Tooth Number: Click tooth number which corresponds to the image box

4. Editing and deleting an existing template

1. Select template at the Template List and click **Open** or double click the template at the list.
2. Click **Image Display Format** to change the format.
3. Double click **Image Box** if you want to change the image box property.
4. To Delete template, select template at the list and click **Delete**